

# State of Wyoming Corner Record

(In compliance with the **CORNER PERPETUATION AND FILING ACT**, Wyoming Statutes, 1997 Section 33-29-140 et. seq., and the Rules and Regulations of the Board of Professional Engineers and Professional Land Surveyors)

Reverse side of this form may be used if more space is needed.

Record of original survey and citation of source of historical information (if corner is lost or obliterated). Description of corner monumentation evidence found and/or monument and accessories established to perpetuate the location of this corner. Sketch of relative location of monument, accessories, and reference points with course and distance to adjacent corner(s) (if determined in this survey). Method and rationale for reestablishment of lost or obliterated corner.

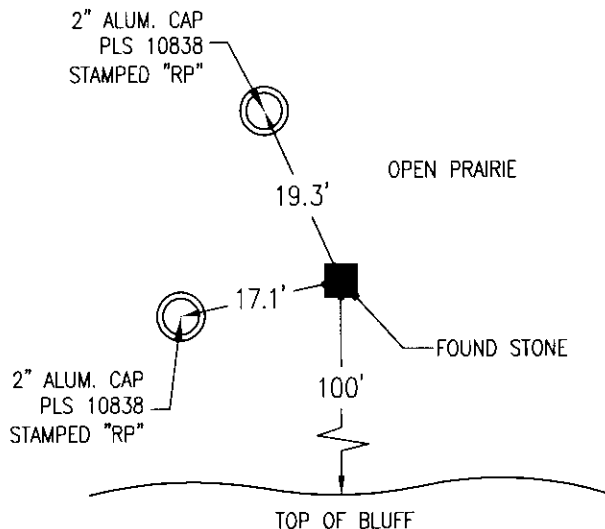
**FOUND:** FOUND ORIGINAL GLO STONE, CLOSING CORNER TO STATE LINE (COLORADO TERRITORY). STONE IS BOULDER AND IS 17x9x4, SET IN UPRIGHT POSITION, FIRMLY PLANTED IN, A MOUND OF STONES. REFERENCED AS SHOWN.

**SET:** NOTHING

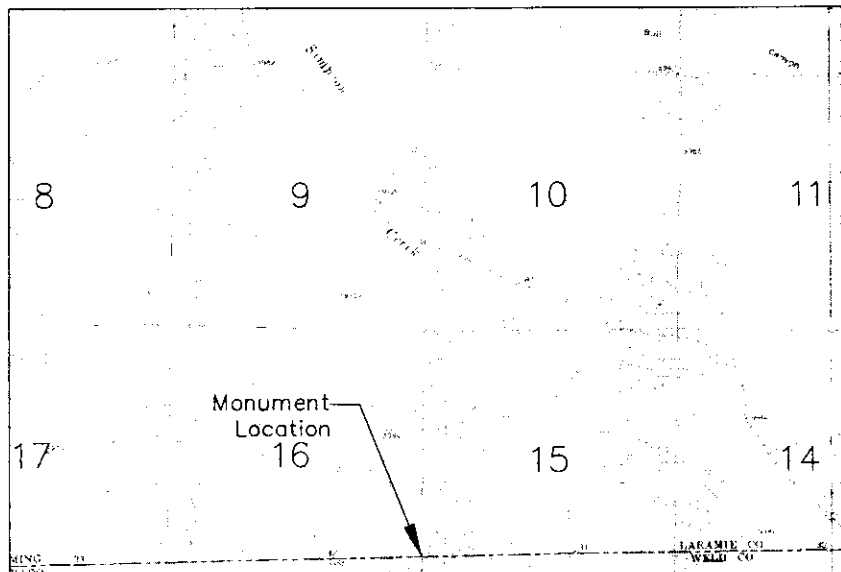
**TIES:** N89°27'10"E, 5357.27' TO THE FOUND STONE CLOSING CORNER FOR THE NORTH LINE OF THE COLORADO TERRITORY BETWEEN SECTIONS 14 AND 15.

N02°10'35"E, 4498.06' TO THE FOUND STONE SECTION CORNER 9, 10, 15, 16.

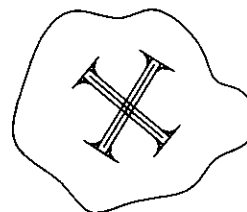
**HISTORY:** THE SUBDIVISIONS WERE DONE IN 1868 BY E. D. BRIGHT. THE PLATS AND ORIGINAL FIELD NOTES WERE OBTAINED FROM THE BLM. THE CLOSINGS ON THE BOUNDARY OF THE COLORADO-WYOMING TERRITORIES WERE ACCOMPLISHED IN 1874 BY FOWLER AND JOHNIGER(sp). THE PLATS AND ORIGINAL FIELD NOTES WERE OBTAINED FROM THE BLM.



**Location Sketch**  
1" = 20'



**Monument location**



**FOUND STONE**  
NO VISIBLE MARKINGS, SET  
UPRIGHT IN A MOUND OF STONES AT  
APPROXIMATE RECORD POSITION

**Monument Inscription**

Date of Field Work: 7/11/07

Office Reference: 2730

## Cross Index Plat

	1	2	3	4	5	6	7	8	9	10	11	12	13	14	15	16	17	18	19	20	21	22	23	24	25
A																									
B	+	+	+	+	+	+	+	+	+	+	+	+	+	+	+	+	+	+	+	+	+	+	+	+	+
C		6																							
D	+	+	+	+	+	+	+	+	+	+	+	+	+	+	+	+	+	+	+	+	+	+	+	+	+
E																									
F	+	+	+	+	+	+	+	+	+	+	+	+	+	+	+	+	+	+	+	+	+	+	+	+	+
G																									
H	+	7																							
J	+	+	+	+	+	+	+	+	+	+	+	+	+	+	+	+	+	+	+	+	+	+	+	+	+
K	+	+	+	+	+	+	+	+	+	+	+	+	+	+	+	+	+	+	+	+	+	+	+	+	+
L																									
M	+	18																							
N	+	+	+	+	+	+	+	+	+	+	+	+	+	+	+	+	+	+	+	+	+	+	+	+	+
O	+	+	+	+	+	+	+	+	+	+	+	+	+	+	+	+	+	+	+	+	+	+	+	+	+
P																									
Q	+	19																							
R	+	+	+	+	+	+	+	+	+	+	+	+	+	+	+	+	+	+	+	+	+	+	+	+	+
S	+	+	+	+	+	+	+	+	+	+	+	+	+	+	+	+	+	+	+	+	+	+	+	+	+
T																									
U	+	30																							
V	+	+	+	+	+	+	+	+	+	+	+	+	+	+	+	+	+	+	+	+	+	+	+	+	+
W	+	+	+	+	+	+	+	+	+	+	+	+	+	+	+	+	+	+	+	+	+	+	+	+	+
X																									
Y	+	31																							
Z	+	+	+	+	+	+	+	+	+	+	+	+	+	+	+	+	+	+	+	+	+	+	+	+	+
	1	2	3	4	5	6	7	8	9	10	11	12	13	14	15	16	17	18	19	20	21	22	23	24	25

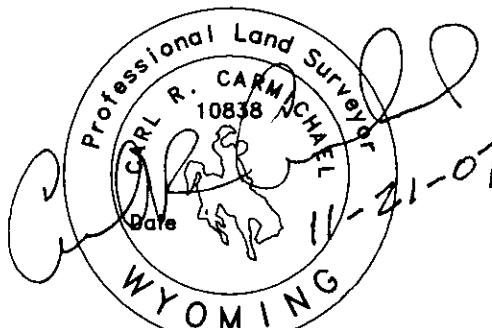
Firm/Agency, Address

AVI P.C.  
2035 WESTLAND RD.  
CHEYENNE, WY. 82001

Telephone Number: 307-637-6017

This corner record was prepared by me or under my direction and supervision.

**SEAL & SIGNATURE**



RECORDED 11/21/2007 AT 10:34 AM REC# 488237 JK# 2034 PG# 1047  
DEBRA K. LATHROP, CLERK OF LARAMIE COUNTY, WY PAGE 1 OF 1

Corner Name Closing Corner Section CC to Colorado Territory on the line Between Sections 15 and 16, T12N, R65W, W, 6th P.M. County: Laramie Wyoming

SBRPEPLS/PLSW: March 1994; PLSW January 1998

Cross-Index No.: N.2-13